

# RISING FROM THE DEPTHS



UTILISING MARINE CULTURAL HERITAGE IN EAST AFRICA  
TO HELP DEVELOP SUSTAINABLE SOCIAL, ECONOMIC AND CULTURAL BENEFITS



A 4-yr project (2017-2012) funded by the UK Global Challenges Research Fund (GCRF) through the Arts & Humanities Research Council Network Plus (Grant Ref: AH/R005443/1)

## Theme 3 Using Maritime space: Development, Innovation and Resilience

### Potential research opportunities related to coastal management approaches

**Dr Luciana S. Esteves**

Associate Professor  
in Physical Geography

**Dr Cari Ballesteros**

PDRA

**Pauline Bricker**

Intern

Department of Life & Environmental Sciences  
Faculty of Science & Technology  
Bournemouth University

# AHRC and Global Challenges

(From: Adam Walker, Head of Languages, Literature and International Engagement ([a.walker@ahrc.ac.uk](mailto:a.walker@ahrc.ac.uk)))

Overarching themes:

Addressing Inequalities

Cohesive communities

Migration and diasporas

Urbanisation

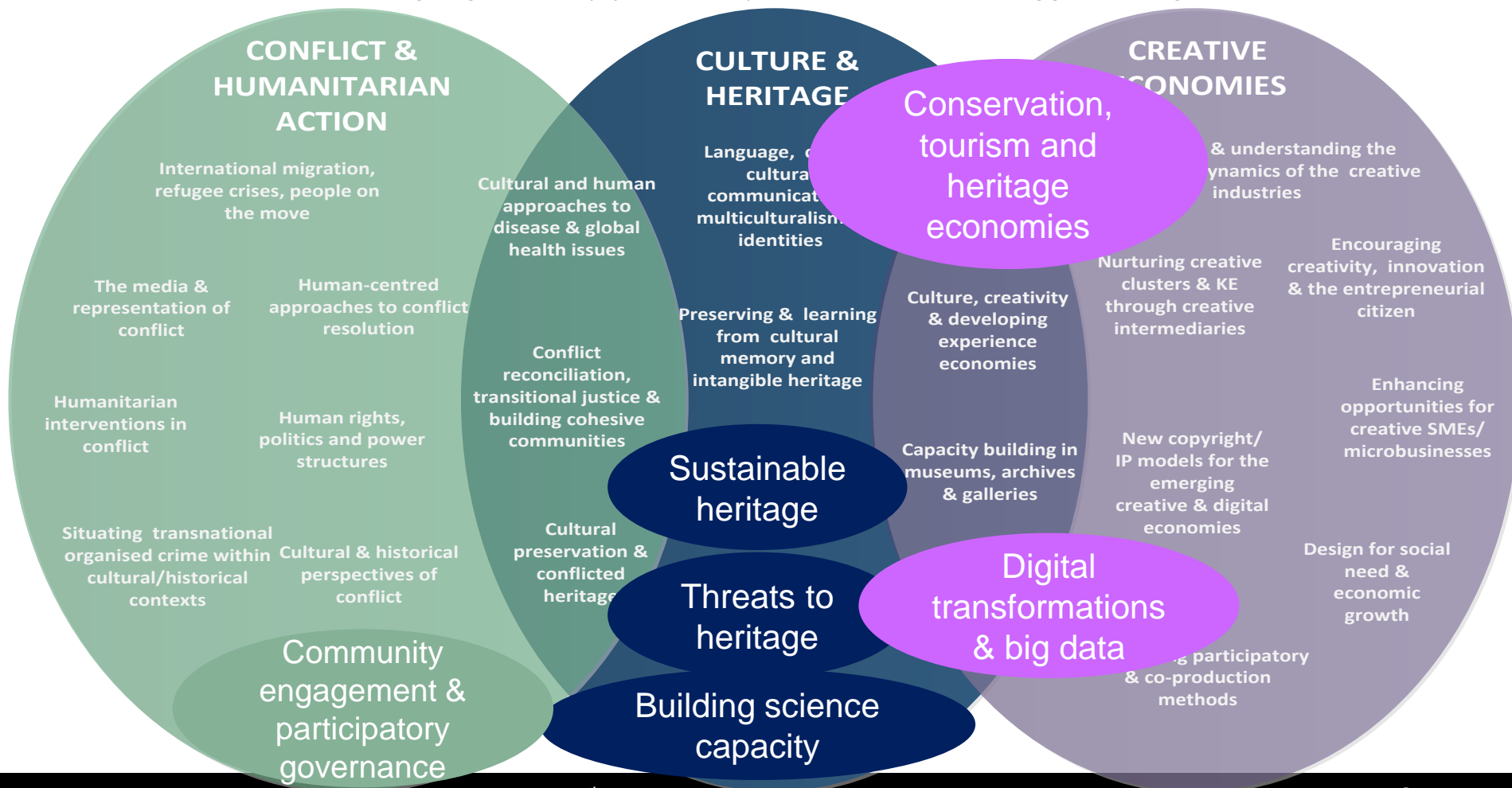
Capacity building

Legal & ethical frameworks

Wellbeing

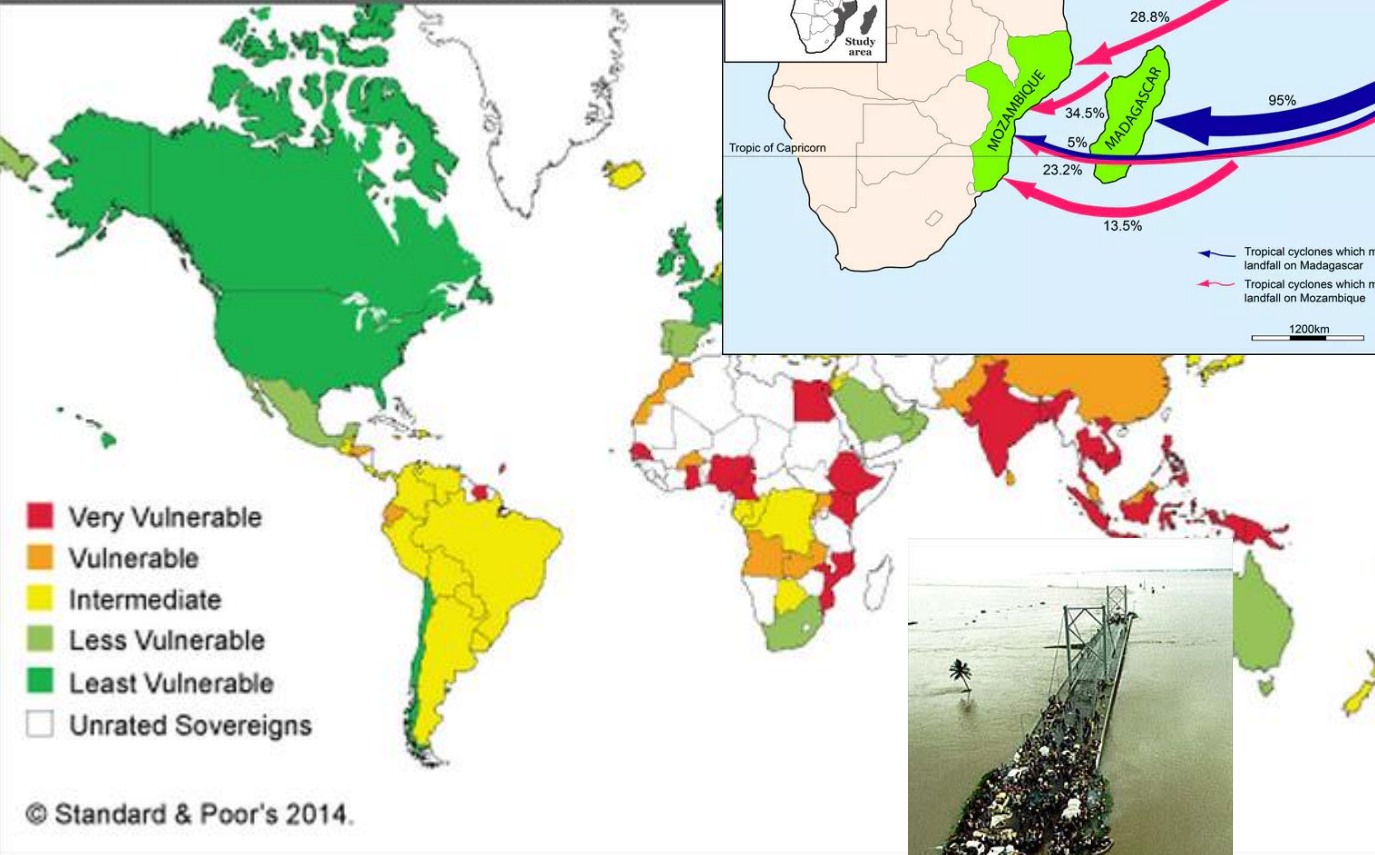
Sustainability

*Recognising the centrality of the human experience is essential to addressing global challenges*



# Marine and coastal zone challenges (climate change and natural hazards)

Potential Vulnerability To Climate Change





# Marine and coastal zone challenges (human-induced)

## Indian firm to invest \$500M in Mozambique port construction

January 09, 2018 to 16:01 1086

APA-Maputo (Mozambique)

*India's Essar Ports Group has announced plans to invest \$500 million in the construction of a port with the capacity to handle 20 million tonnes of coal per annum in Mozambique's central port city of Beira, APA can report.*

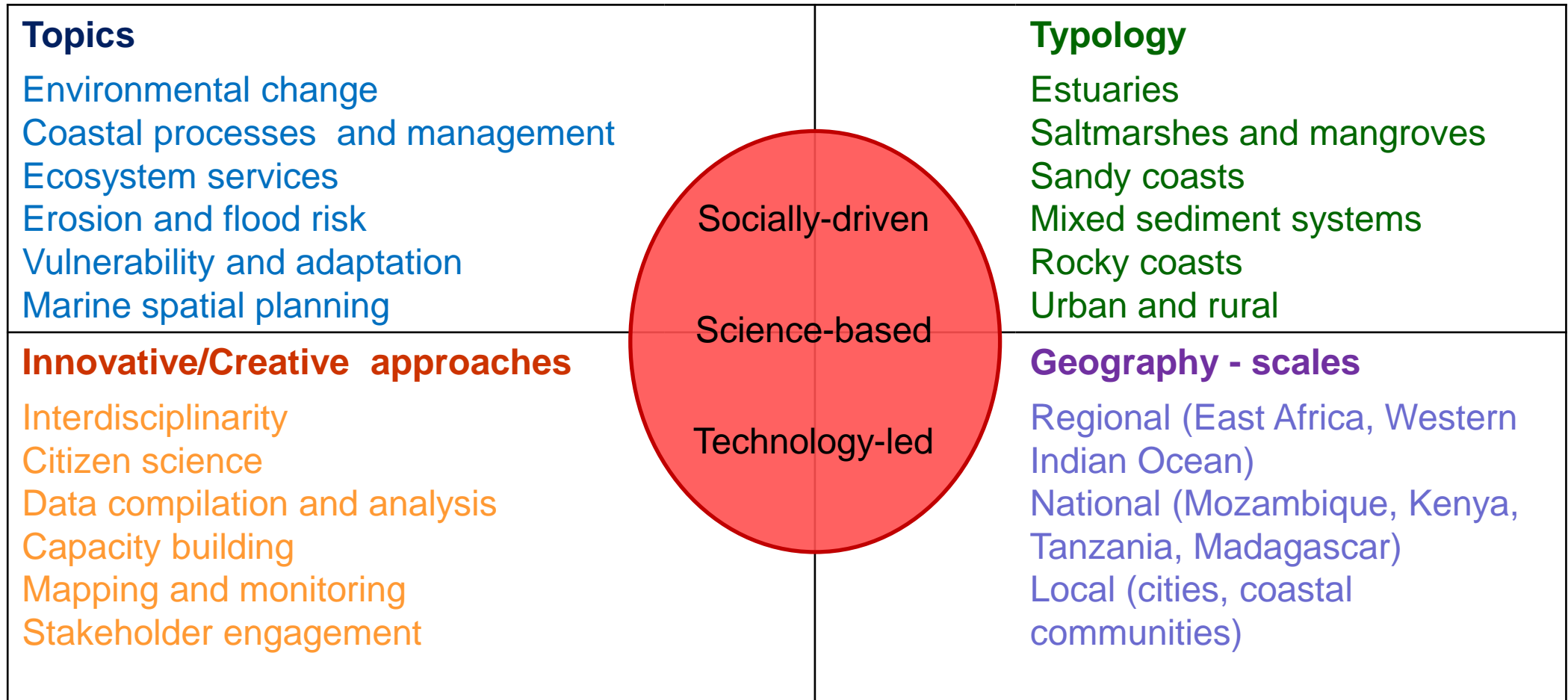


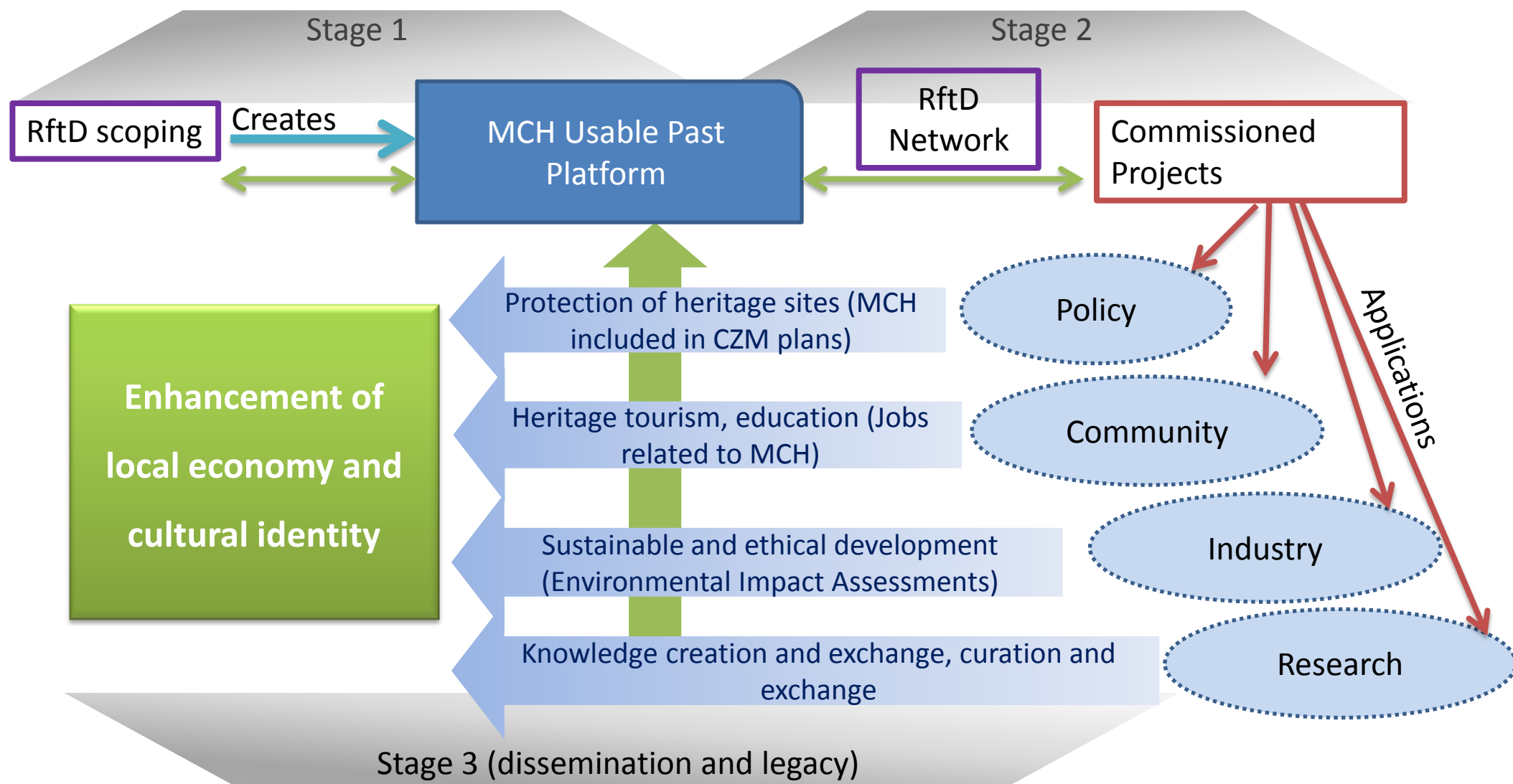
*"PALMA IS A SHINING EXAMPLE OF WHAT THE POSITIVE EFFECTS OF THE NATURAL GAS DISCOVERY WILL HAVE ON TOWNS SUCH AS THESE."*

<http://www.reimag.co.za/2015/11/04/africa-palma-the-new-gem-of-mozambique/>



# What we are looking for?







What are the MCH assets in the view of local people? Are they at risk?

## Identifying/mapping MCH/vulnerability and risk analysis



How local communities perceive coastal change?

Traditional knowledge

Social surveys/workshops/forum

How does coastal change affect their lives/MCH assets?

How have they adapted to coastal change? What options are there for the future?

## KE activities

What coastal management approaches may reduce environmental and social vulnerabilities (affecting MCH)?

Policy analysis and contrasting with implementation practices



# Research to date at BU

We aim to assess current climate-related and human-induced threats to coastal and maritime heritage in East Africa.

**We are creating a database on existing regional data and other disperse data we are collating hope to share data on our website.**

- Literature review on hazards and climate change affecting **coastal East Africa**
- Identification of **coastal hazards and climate change** indicators
- Some difficulties in finding detailed **local data**
- Input required on the link between climate change/coastal hazards and specific impacts on **marine cultural heritage**